

Pinellas Trail User Count Data Summary

Automated Trail Counter Data Collection Period:
October 1st – 31st (31 days)

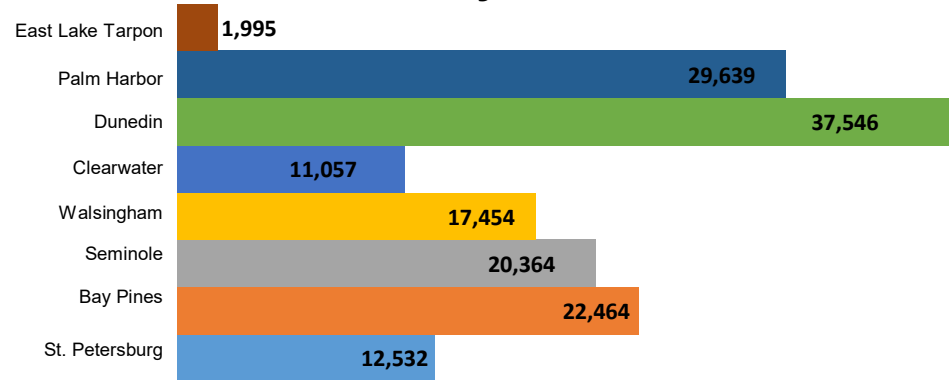
October 2021

31-Day Count Total: **153,051**
Daily Average Users: **4,937***

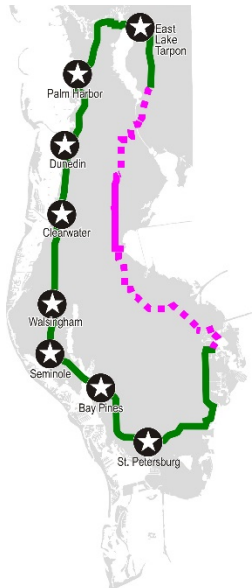
Highest Daily Totals:

- #1 – Saturday, October 9th (Dunedin – 2,005)
- #2 – Sunday, October 17th (Palm Harbor – 1,539)
- #3 – Saturday, October 23rd (St. Petersburg – 807)

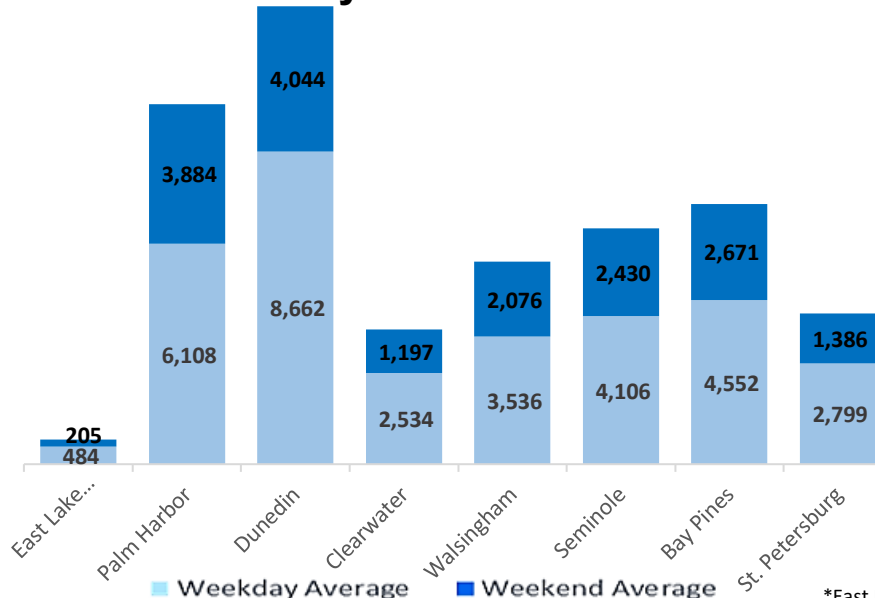
October Trail Users by Counter Location



Counter Locations



Weekday & Weekend Profile



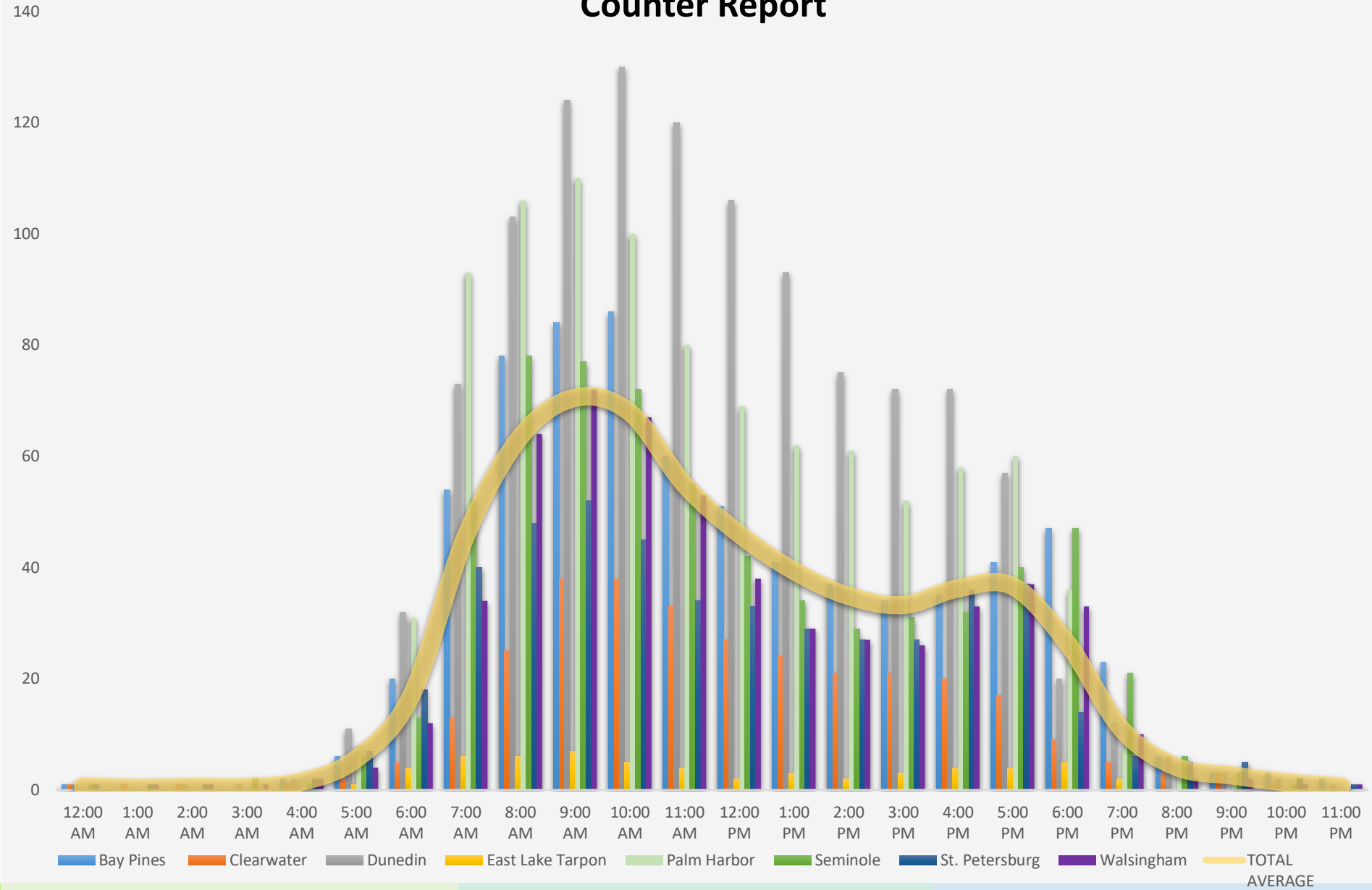
Trail User Mode Split

Counter Location	Walking (Icon: Person)	Cycling (Icon: Bicycle)
Palm Harbor:	19%	81%
Dunedin:	15%	85%
Clearwater:	2%	98%
Walsingham:	8%	92%
Seminole:	21%	79%
Bay Pines:	16%	84%
St. Petersburg:	43%	57%

Source: Forward Pinellas *October 2021*
National Weather Service: [October 2021](#)

*East Lake Tarpon Counter provided only partial count for cyclists in October 2021.

October 2021 Average Hourly Counter Report



Pinellas Trail User Count Data Summary

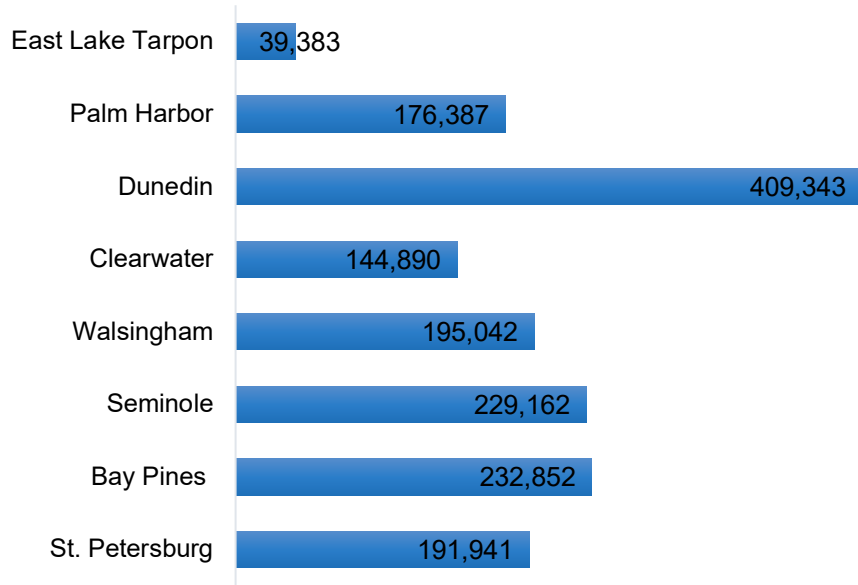
Automated Trail Counter Data Collection

Period: January – October 2021 Data*

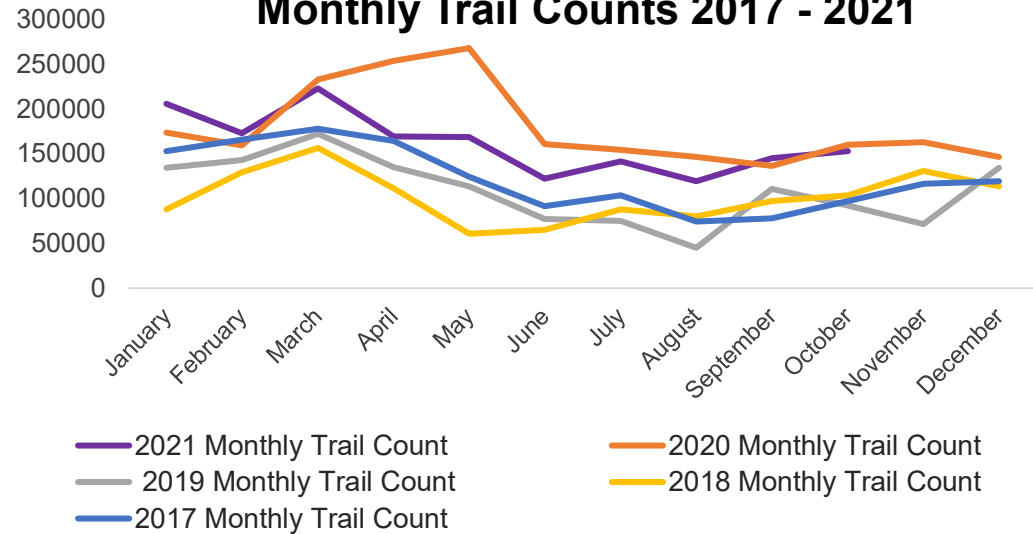


**January-October 2021
Total Count:
1,619,000**

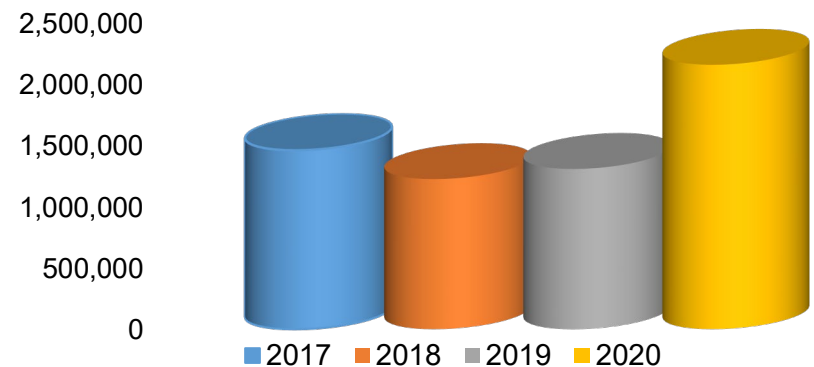
Year to Date Data Per Location



Monthly Trail Counts 2017 - 2021



Pinellas Trail Use 2017 – 2020



* Technical issues with several counters in 2019, 2020 and 2021 resulting in several missing days of data.